

# News from the Palette



**Art Guild of Louisiana**

[www.artguildlouisiana.org](http://www.artguildlouisiana.org)  
[agl@artguildlouisiana.org](mailto:agl@artguildlouisiana.org)

**FEBRUARY 2024**

## Looking Forward to Carrying It Forward! ... Anna Hingle

As we enter our 71st year, much has changed since the early years of our organization, but the principles that we were founded on remain the same. For 70 years we have been steady in our mission to deliver art education opportunities to our community and to give artist members exhibition opportunities regardless of where they are on their art journey. It is our honor to carry this legacy forward into 2024. Here is what we have planned for you.



## Art Education

Our approach to art education is three-fold: **workshops, open studio** and our **art library**.

- We have some great workshops on the books for 2024. Two nationally acclaimed artists will be teaching workshops for us. **Suzie Baker's** April workshop on *Creating Compelling Compositions En Plein Air* is already sold out! In August, **Keiko Tanabe** will teach a watercolor class in conjunction with judging our River Road Show. In June, Ann Warner will teach *Taking Your Paintings to the Next Level*. We have at least a dozen beginner and intermediate level workshops scheduled in drawing, watercolor and acrylics by Larry Downs and Roberta Loflin. Also, in the planning process is a class on critiquing, a couple of watercolor Zoom classes, and even more that we are currently in discussions with instructors about.
- We will continue to offer open studio three days every week – Tuesdays 11-4 (non-oil media), Wednesdays 11-4, and Sundays 1-4. This environment is great for interacting with and learning from other artists. This year we plan to add periodic critique sessions for those who would like formal input and advice on their artwork. We are also adding to our inventory of art supplies and tools in the studio. Many of you are already familiar with our large light boxes, variety of easels, and art props. We also have a variety of art supplies to “try before you buy” such as soft pastels, pan pastels and acrylics, and we have added casein, gouache and charcoal supplies. The biggest news we have is that this year, through the donation of use by several members, we will be adding a Blick Econo Etch Model II Press so that you can try your hand at printmaking. This is an unprecedented opportunity to use a good press, which to the best of our knowledge, is not available anywhere in town outside of universities.
- We also offer art education through our very extensive art **library**. We have many respected titles, both classics and new books. Members are free to check these books out. We all know how expensive art books can be, so this is a huge benefit.

## Exhibits

Our approach to exhibiting is three-fold as well: **member exhibits**, the **River Road Show**, and a **member gallery** on our website.

- We currently have 8 exhibit opportunities for all members this year. Six will be at our gallery in the Independence Park Theatre, one will be at the main branch of the East Baton Rouge Parish Library, and one will be at the Bluebonnet branch. Two of these exhibits will be judged shows. Please see the website for the schedule and exhibit details.
- Our signature annual River Road Show is a national juried show that we have the honor of putting on for the 54th year in 2024. This is a prestigious show, juried by a nationally acclaimed artist, and a wonderful opportunity for artist members that's right here in our own city, hosted by our own organization. Look for the call for entries in March and start thinking about the artwork you might submit!
- All members can have their own web gallery for showing their art online on our website. This is a valuable benefit that affords members their own link to share with others. This link can be put in your email signature line, put on business cards, shared with family and friends, etc. Once a month we even offer a photographer's services to take digital pictures of member artwork for this gallery.

I think it's clear that if our 1953 predecessors/founders could read our 2024 newsletter, they would be proud that what they started is not only still standing, but is thriving, and building on the same foundation that it was in 1953. We grew our membership by 20 percent last year! We hope to do the same this year. We've got a lot to offer. Help us spread the word on what we're about and we hope to see you in 2024 in the studio, in our workshops, and at our exhibits!

## PONDERINGS FROM THE PRESIDENT

Happy New Year!

This is my last year as your President—a job I took on (reluctantly, I admit) because there were no other nominations. I'm not sure why, but we are having trouble engaging members to take on leadership tasks. Worse yet, according to a financial projection around 2020 our organization was slated to run out of funds in 2022.

But we are still here, alive and well, and we just wrapped up the 70<sup>th</sup> anniversary celebrations! Thanks to the efforts of the Board and members/volunteers through various activities - exhibits, workshops, fundraisers, grants and donations - we are rebuilding a brighter outlook for the future.

While cleaning out, rearranging the Studio for the holidays, we came across a large, framed canvas with writing on it. Across the top it said something like "What the Guild Means to Me". Then in script (mostly legible) in various angles, member artists left comments.

So, I started thinking about that. My answer would have to be . . . Home away from home . . . Friends become family . . . A judge-free zone (to borrow a phrase from Planet Fitness) . . . Sharing is Caring (to borrow from the Care Bears).

Now that I've got you thinking about it, AGL would like more input as to what AGL means to you. We've made a few changes at Open Studio—we've invited Billie Bourgeois to give aid and encouragement and maybe a critique for those who want it. Larry Downs has some Thursday afternoons in 2024 to do the same. We're working on plans for evening hours.



Other activities not yet implemented are having a phone chain to provide you with a friendly reminder of upcoming events/activities, having a fun fundraiser—and possibly, toward the end of the year, another garage sale.

By the time you read this, your Board will have had the annual Strategic Planning Meeting and will be ready to start the new year brimming with ideas to make AGL more meaningful to each of you. And we'd love to hear any ideas you have. Happy Painting !! ...Marilyn Gensler

Painting: The art of protecting flat surfaces from the weather and exposing them to critics.  
... Ambrose Bierce

## 2023 MEMBERSHIPS EXPIRED DECEMBER 31 - RENEW YOUR MEMBERSHIP NOW!

AGL 2023 memberships expired December 31, 2023! Renew YOUR membership now! AGL membership is \$45 for regular membership or \$25 for full-time student (18 years and up) for one calendar year, January 1 through December 31. Memberships not renewed by March 31 will no longer receive AGL emails.

Pay  
Dues

Please consider including a donation with your membership. We are an all volunteer organization so 100% of your dues and donation dollars go directly to Guild operations. And because we are a 501(c)(3) non-profit organization your donation is tax deductible as allowable by law.

There are three easy ways to join, renew, and/or to give a membership to a friend or family member:

- 1) **Online** at [www.artguildlouisiana.org/join](http://www.artguildlouisiana.org/join). You may pay with a credit card or via PayPal.
- 2) **Mail** your check and a completed Membership Form to the Guild. Be sure to note on your check "2024 Dues." Make Checks payable to "Art Guild of Louisiana" or "AGL" and mail it to AGL, P.O. Box 42072, Baton Rouge, LA 70835. **BE SURE TO INCLUDE A COMPLETED MEMBERSHIP FORM WITH YOUR CHECK.** Download and print the membership form from the website: [www.artguildlouisiana.org/downloads/AGL-membership-form.pdf](http://www.artguildlouisiana.org/downloads/AGL-membership-form.pdf)
- 3) **Pay in person** at the Studio in the Park, 2490 Silverest Avenue, Baton Rouge during open studio hours.—Tuesdays and Wednesdays from 11:00am-4:00pm and Sundays from 1:00-4:00p.m.

For questions or comments, contact AGL at [www.artguildlouisiana.org/contact](http://www.artguildlouisiana.org/contact). Be sure to include a phone number if you want someone to speak with you.

## Condolences

December 2023 was challenging for open studio attendees and other friends and family of Lisa Marie Long Sanchez. Lisa succumbed quickly and unexpectedly to the ravages of a silent and aggressive bone cancer on December 20, 2023, at the age of 67. She was an avid enthusiast of life, family and art. She was an active member of the Guild since 2015. She served on the AGL Board first as Secretary and then Member at Large as workshop committee liaison. Lisa was a talented artist who regularly attended Tuesday open studio where she quickly found an "art family". She had a loving spirit and an open heart and was always generous with her knowledge of art (or anything really)...always ready to help anyone who asked. She was a friend to everyone she met and will be deeply missed by many. Heartfelt prayers and hope for strength go to her husband Lynn Paul Sanchez and other family members and friends, all who were lucky enough to have had Lisa in their life.



## River Road Show -2024

The 54<sup>th</sup> River Road Show is in the final planning stages. Once again, the exhibit is scheduled to be held at the Louisiana State Archives Building during August and September 2024. We feel extremely fortunate to have internationally renowned, award-winning watercolor artist, instructor and judge Keiko Tanabe as the River Road judge and juror. The Guild will also sponsor a three-day workshop by Tanabe at the Studio in the Park August 16-18; registrations are open on the AGL website. More information about the judge and details for the 54<sup>th</sup> River Road Show are forthcoming soon.

## AGL Christmas Party/Member Meeting

On December 4, the Studio in the Park filled with holiday atmosphere as member artists gathered to exchange holiday greetings with fellow artists. Tables were filled with goodies to eat, and mystery gifts surrounded the tree. And not to be forgotten a tabletop covered with identically wrapped artwork for the random painting exchange. It was the annual AGL Christmas Party/Member Meeting.



The President started the meeting by giving a brief overview of the status of the Guild and mention of upcoming events, including periodic critique sessions during open studio on the third Wednesday of the month offered by Billie Bourgeois, the possibility of an evening open studio and welcomed our new Vice President, Jennifer Cutrer and our new Treasurer, Claudia LeJeune whose terms began January 1, 2024.

## Pastel Open Studio Resumes in 2024

Pastel Open Studio resumed at the Studio in the Park on January 25, with Dee Dee Wilbert once again serving as facilitator. Questions about Pastel Open Studio can be directed to Dee Dee at [deedeewilbert@gmail.com](mailto:deedeewilbert@gmail.com).

Have you been interested in trying out pastels? This is a wonderful place to do so. Network with other artists working in pastel; exchange tips, ideas and conversation. If you would like to "try out" the pastel without investing in a new medium, the studio has an assortment of "community" pastels that we are willing to share, but you will need to bring your own paper. No fees, no registration . . . just show up.

Once a month, on the 4<sup>th</sup> Thursday of each month from 11:00-3:00 the Guild invites members interested in working in pastels to join and connect with like-minded artists. Although this open studio is geared to pastel artists, other mediums are also welcome, except no oils.

## Downtown Arts Market

January 6, the first Saturday of the new year was a chilly morning but that did not deter our President, Marilyn Gensler, from rising and shining and heading downtown to the Arts Market to enjoy the vendors, meet new people, and promote AGL. The Arts Market, sponsored by the Baton Rouge Arts Council in conjunction with the Red Stick Farmers Market, takes place the first Saturday of each month. As a nonprofit organization, we are eligible to set up a tent/booth for a nominal fee, to distribute material and promote AGL. The market is open from 8:00am till Noon. If you think you might be interested in getting a couple of friends and joining one Saturday morning contact Marilyn Gensler at [whelangal@bellsouth.net](mailto:whelangal@bellsouth.net)



## Opportunities

### 31<sup>st</sup> Animals in Art – Call for Entry – LSU Veterinary School of Medicine

February 29, 2024 - Deadline for entries and fees

Week of April 1, 2024 - Acceptance letters email to artists

April 30, Deadline for receiving accepted entries

May 11, 2024 - Open Reception

June 2, 2024 - Exhibition closes

This is an international juried and judged show open to all media. For more information and details on entry requirements visit their website at the link below:

[https://www.lsu.edu/vetmed/events/animals\\_in\\_art.php](https://www.lsu.edu/vetmed/events/animals_in_art.php)

## EXHIBITS

### Current Exhibit – Winter Member Show

The current exhibit at Independence Park Theatre Gallery is open to the public through March 14, 2024, during regular business hours Tuesday – Friday, 10:00am-5:00pm. Stop by and enjoy 31 works of art by 15 talented area artists.

A People's Choice Ribbon will be awarded to the artist whose painting receives the most votes from visitors. In addition, a \$25 cash prize will be given away in a random drawing for exhibiting artists at a reception on Sunday, February 11 from 2-4pm at Independence Park Theatre Gallery. Exhibiting artists earn one "chance" per entry for the random cash drawing.

Exhibiting artists are encouraged to attend the reception and to bring finger food for the snack table. Invite your friends and family to join you for an afternoon of art and camaraderie.

Also, during the February 11 reception, we will be presenting two People's Choice ribbons to two lucky and talented winners from the member exhibit that was open at Goodwood Library throughout December. The exhibit included 54 works of art by 21 artists and garnered 545 votes from library goers who enjoyed the art and voted for their favorite painting.

**COME SEE THE SHOW AND VOTE FOR YOUR FAVORITE!**

**The Twelve Days of Christmas** was a special holiday member exhibit at the Independence Park Theatre Gallery that was open to the public from November 9, 2023, until January 11, 2024. Congratulations to our very own Guild President, Marilyn Gensler, whose mixed media painting *A Country Christmas* won the People's Choice ribbon in that fun exhibit.



## Next Up: Call for Entry – Louisiana Landscapes! Member Exhibit

In recognition of the unique culture that is Louisiana, we are calling on members to celebrate what they love about our State. Louisiana is recognized for its beautiful and mysterious bayous and swamps, diverse wildlife, fabulous food, unique architecture from stately plantation homes to shotgun houses, and a people whose “joi de vivre” is like nowhere else. So paint your favorite “Louisiana” and share it with others in the upcoming member exhibit.

The **entry fee** is \$10 for the first entry and \$5 for each additional entry, with a maximum of 5 entries. The exhibit is up March 14 until May 9, and will be open to the public Tuesday- Friday from 10:00am to 5:00pm.

This is a non-juried exhibit. All original, two-dimensional art is eligible except photography, computer enhanced artwork or workshop art. All artwork must meet AGL Installation Requirements found at [www.artguildlouisiana.org/exhibits](http://www.artguildlouisiana.org/exhibits). Interested artists must bring art to Independence Park Theatre Gallery, 7950 Independence Boulevard, on **March 14**, between 11:00am and 1:00pm.

Artwork must have been completed in the past 2 years and must not have been shown previously in more than one AGL exhibit. All artwork must remain in the show until the end of the exhibit. BREC takes a 20% commission on all sales.

A People’s Choice Ribbon will be presented at an artists’ reception on **April 30**. Exhibiting artists will be eligible to win a \$25 cash prize in a random drawing conducted during the reception.

## UPCOMING WORKSHOPS

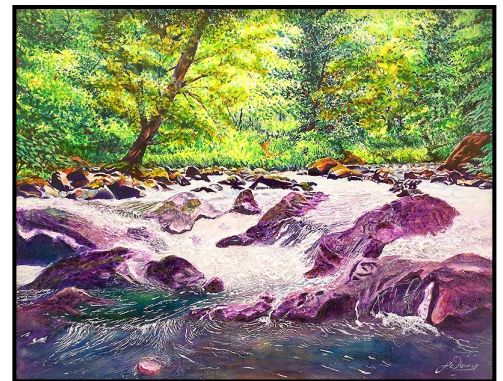
### Larry Downs – Acrylics 1: Color Your Life with Acrylics

February 8, 15, 22, 29 (Thursdays), 3:00 – 6:00pm

\$75 members / \$90 nonmembers

Workshop Coordinator: Karri Oaks: [karrilouwho@gmail.com](mailto:karrilouwho@gmail.com) or 225-405-3988

In this four-week course, Larry will take the participants through the tools, concepts, and applications of basic acrylic painting. Larry’s instruction will cover how to use acrylics like watercolors, acrylics as oils, and abstract acrylics. Along the way, participants will learn how to paint basic geometric shapes, understand values, and use additives to create texture.



### Roberta Loflin – All Friends-Furry and Feathered – Watercolor

February 17, 24, March 2, 9 (Saturdays), 9:30am - noon

Early Bird Fee thru February 2: \$60 members / \$75 nonmembers

Regular Fee begins February 3: \$75 members / \$90 nonmembers

Workshop Coordinator: Barbara Andrepont: [bandrepoint@bellsouth.net](mailto:bandrepoint@bellsouth.net) or 225-773-8020

Learn techniques for painting fur and feathers. You can impress your pet (and your family) with awesome pet portraits in watercolor!



## Larry Downs – Drawing 2: Composing in Depth

March 7, 14, 21, 28 (Thursdays), 3:00 – 6:00pm

Early Bird Fee thru February 25: \$60 members / \$75 nonmembers

Regular Fee begins February 26: \$75 members / \$90 nonmembers

Workshop Coordinator: Karri Oaks: [karrilouwho@gmail.com](mailto:karrilouwho@gmail.com) or 225-405-3988

\*Drawing 1 is not required to take this course provided the participant has a knowledge of basic drawing skills.

In this four-week course, Larry will lead participants through a more advanced discussion of elements and principles of design. Using those principles, participants will compose their own still life drawing. Emphasis will be placed on composition, perspective, and finishing drawing. Participants will begin a work that can be completed for a finished work.



## Roberta Loflin – Compose Yourself-Composition and Still Life - Watercolor

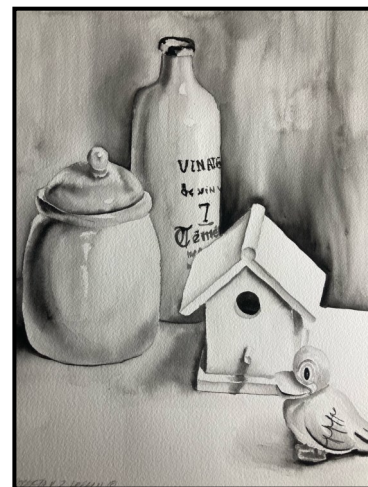
March 23, 30, April 6, 13 (Saturdays), 9:30am - noon

Early Bird Fee thru March 8: \$60 members / \$75 nonmembers

Regular Fee begins March 9: \$75 members / \$90 nonmembers

Workshop Coordinator: Barbara Andrepont: [bandrepond@bellsouth.net](mailto:bandrepond@bellsouth.net) or 225-773-8020

You will focus on composing your paintings, working with values and lighting. We'll work from still life "models," a good practice to hone your skills.



## Larry Downs – Acrylics 2: Painting the Traditional Way

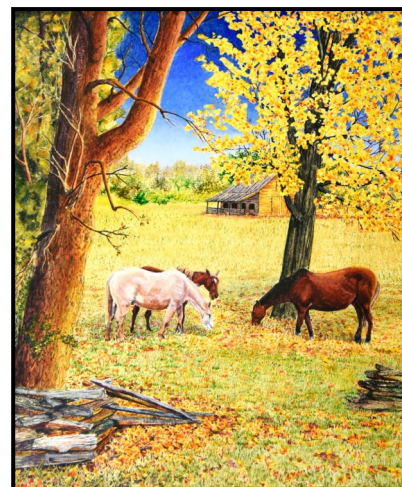
April 4, 11, 18, May 2 (Thursdays), 3:00 – 6:00pm

Early Bird Fee thru March 24: \$60 members / \$75 nonmembers

Regular Fee begins March 25: \$75 members / \$90 nonmembers

Workshop Coordinator: Karri Oaks: [karrilouwho@gmail.com](mailto:karrilouwho@gmail.com) or 225-405-3988

In this four-week course, Larry will guide participants in creating an interesting composition. Uses for a viewfinder will be covered. The rest of the course will be spent composing and painting. Participants will begin a work that can be completed for a finished work.



## Suzie Baker – Creating Compelling Compositions En Plein Air

April 23-25 (Tuesday-Thursday), 9:00am - 4:00pm

\$525 members / \$550 nonmembers

THIS WORKSHOP IS **SOLD-OUT!** To add your name to a waiting list, contact the Workshop Coordinator, David Gary at [dgary@redstick.com](mailto:dgary@redstick.com)

## Roberta Loflin – Textures and Patterns - Watercolor

May 4, 11, 18, 25 (Saturdays), 9:30am - noon

Early Bird Fee thru April 19: \$60 members / \$75 nonmembers

Regular Fee begins April 20: \$75 members / \$90 nonmembers

Workshop Coordinator: Barbara Andrepont: [bandrepoint@bellsouth.net](mailto:bandrepoint@bellsouth.net)  
or 225-773-8020

“How do you paint that?” ... the perennial question. We'll have a variety of textures and patterns, and will work to replicate them in watercolor.



## Ann Warner – Taking Your Paintings to the Next Level - Oil

June 14-16 (Friday-Sunday), 9:00am - 4:00pm

Early Bird Fee thru May 14: \$275 members / \$325 nonmembers

Regular Fee begins May 15: \$325 members / \$375 nonmembers

Workshop Coordinator: David Gary, [dgary@redstick.com](mailto:dgary@redstick.com) or 225-252-8384

The workshop will begin with a demonstration. Fundamentals of good painting, composition, design, advanced color theory, and technique will be covered on the first day.

What you paint is your choice. I suggest you work from life - flowers are a great subject. However, you may finish an old painting or begin a new one from photos or iPads. Be sure to have good reference materials. I will demonstrate painting a floral subject. A variety of subjects by individuals gives the class more opportunities for learning principles that apply to landscapes also. I hope you bring some landscape and other paintings you have done for the learning critique time that will be scheduled.

My mentor, Carl Thorp, 1912-1989, instilled a great appreciation of having critique and viewing fine art as a means of growing as an artist. Every class consisted of analyzing paintings of world master painters, professionals, and student work in progress. He gave strategies for how each classroom painting could be executed to a successful finish. I also use this in my teaching, and I desire to teach others how to analyze work.



This workshop is to be customized to meet your needs. If possible, I want to see images of your work before the class date so that my lesson plans can be geared toward you.

What are your interests? What do you want to learn? What are your strong points? What do you need to do to improve your paintings?

Robert Henri enjoyed different painting styles in his class. I do also. Feel free to use the painting medium of your choice; the characteristics of a good painting apply to all. I will be painting in oils.



If you would like to help with any aspect of producing the newsletter please contact Leah Schwartzman at [newsletter@artguildlouisiana.org](mailto:newsletter@artguildlouisiana.org).

Send member information for the newsletter to [newsletter@artguildlouisiana.org](mailto:newsletter@artguildlouisiana.org) by the 10<sup>th</sup> of every other month : January, March, May, July, September, November.



## News from the Palette

### Art Guild of Louisiana

Studio: 2490 Silverest Ave  
Baton Rouge, LA 70816  
Mailing: PO Box 42072  
Baton Rouge, LA 70835

[agl@artguildlouisiana.org](mailto:agl@artguildlouisiana.org)  
[www.artguildlouisiana.org](http://www.artguildlouisiana.org)  
[facebook.com/ArtGuildofLouisiana](https://facebook.com/ArtGuildofLouisiana)  
[instagram.com/ArtGuildLouisiana](https://instagram.com/ArtGuildLouisiana)



### Visit Art Guild of Louisiana on Social Media

Like, Follow, Share AGL with friends and family  
— ask them to do the same —

Get the word out about YOUR organization

**“connect art and people”**

